

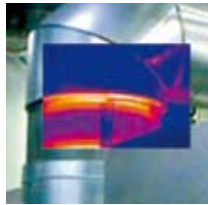
# FLIR B425

Infrared Camera with Thermal Fusion, Touch-Screen Display, and Interchangeable Lens

- 50 mK Thermal Sensitivity
- Digital camera with lamp
- Laser pointer with automatic alignment
- Thermal Fusion, Picture-in-Picture
- 3.5" Touch-Screen LCD Display
- Text, voice, sketch and image marker annotations
- Panorama support



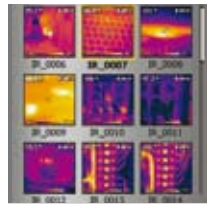
Multifunction Touch Screen



Picture-in-Picture (PiP)



120° lens rotation

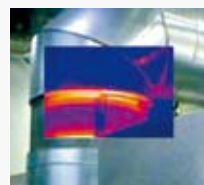
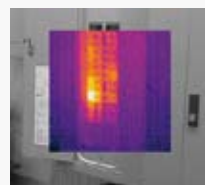


Thumbnail Image Gallery



## FLIR B425 Features

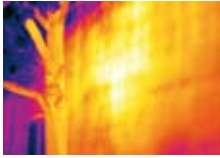
- **High Resolution IR Images** — 76,800 pixels (320 x 240) Infrared resolution
- **Digital Camera** — with flash provides sharp images regardless of lighting conditions
- **Picture-in-Picture (PiP)** — Displays thermal image super-imposed over a digital image
- **Thermal Fusion** — Thermal Fusion, merging visual and infrared images, allows for easier identification and interpretation of infrared images
- **Wide Temperature Range** — Measures from -20°C to +350°C targeting building applications
- **± 2% Accuracy** — Critical for condition monitoring of thermally sensitive targets
- **Insulation alarm** — Shows the insulation performance of the building structure
- **Humidity alarm** — Alerts you to the areas where there is a risk of condensation
- **Thumbnail Image Gallery** — Allows quick search of stored images
- **Rotating Lens** — Convenient rotating lens detents up to 120° for easy viewing angle
- **Li-Ion Rechargeable Battery** — Replaceable battery lasts more than 4 hours of continuous use
- **Laser Pointer** — Pinpoints the hot spot on the IR image with the real physical target
- **Voice Comment Recording** — on images and can be integrated onto report
- **Interchangeable Optics** — Optional 6°, 15°, 45°, 90° lens, 2x and 4x easily attach to the camera body for greater versatility
- **Standard SD Card** — Stores more than 1000 Radiometric JPEG images
- **Delta Temperature** — automatic calculation of temperature difference between two measurement tools
- **Panorama** — Supports the panorama function in FLIR BuildIR software
- **Includes** — SD Memory Card, Li-Ion rechargeable battery with 100-260V AC adaptor/charger, 2-bay battery charger, QuickReport software, USB Mini-B cable, video cable, sun shield, stylus pen & headset, camera lens cap, and transport case



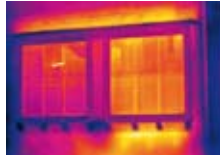
### Picture-in-Picture

Allows for easier identification and interpretation of infrared images. This advanced technology enhances the value of an infrared image by allowing you to overlay it directly over the corresponding visible image. This functionality combines the benefits of both the infrared image and visual picture at the push of a button.

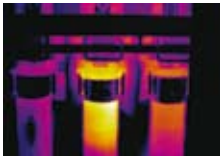
# Applications



Building: Water and mildew in wall



Building: Heat Loss



Electrical: Hot Fuses

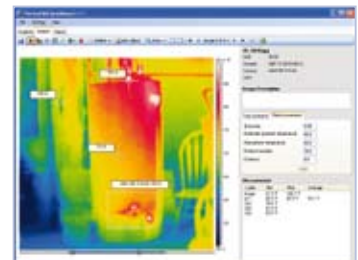


Building: Heat Loss



## FLIR B425 Specifications

Imaging and optical data	
Field of view (FOV)	25° × 19° / 0.4 m
Thermal sensitivity/NETD	50 mK
Focus	Manual/Automatic
Zoom	1–8× continuous, digital zoom, including panning
Spectral range	7.5–13 μm
IR resolution	320 × 240 pixels
Image presentation	
Display	Built-in touch screen, 3.5" color LCD
Image modes	IR image, visual image, MPEG4 video, thermal fusion, picture in picture, thumbnail gallery
Thermal fusion	IR image shown above, below or within temp interval on visual image
Picture-in-Picture	Resizable and movable IR area on visual image
Measurement	
Object temperature range	–20°C to +350°C
Accuracy	±2°C
Measurement analysis	
Spotmeter	5
Area	5 boxes with max./min./average
Isotherm	Detect high/low temperature/interval
Difference temperature	Delta temperature between measurement functions or reference temperature
Measurement function alarm	Audible/visual alarms (above/below) on spotmeters, boxes and difference temperature
Screening	Difference temperature alarm, audible
Humidity alarm	1 humidity alarm, including dew point alarm
Insulation alarm	1 insulation alarm
Set-up	
Color palettes	BW, BW inv, Iron, Rain, RainHC, Bluered
Storage of images	
Image storage	Standard JPEG, including measurement data, on memory card
Image storage mode	IR/visual images; simultaneous storage of IR and visual images; MPEG-4 non-radiometric video
Periodic image storage	Every 10 seconds up to 24 hours
Panorama	For creating panorama images in FLIR BuildIR software
Image annotations	
Voice	60 seconds
Text	Text from predefined list or soft keyboard on touch screen
Image marker	4 on IR or visual image
Sketch	From touch screen
Digital camera	
Built-in digital camera	3.1 Mpixel (2048 × 1536 pixels), and video lamp
Digital camera video recording	Video clip to memory card
Physical data	
Camera weight, incl. battery	0.88 kg
Camera size (L × W × H)	106 × 201 × 125 mm



QuickReport™ PC software enables user to analyze Temperature of all thermal pixels of any FLIR Camera JPEG images

Specifications and prices subject to change without notice.  
Copyright © 2009 FLIR Systems. All right reserved including the right of reproduction in whole or in part in any form.

**FLIR Systems, Sweden**  
World Wide Thermography  
Center  
Rinkebyvägen 19 - PO Box 3  
SE-182 11 Danderyd  
Tel: +46 (0)8 753 25 00  
e-mail: sales@flir.se

**FLIR Systems, France**  
Tel: +33 (0)1 41 33 97 97  
e-mail: info@flir.fr

**FLIR Systems, Germany**  
Tel: +49 (0)69 95 00 900  
e-mail: info@flir.de

**FLIR Systems, UK**  
Tel: +44 (0)1732 220 011  
e-mail: sales@flir.uk.com

**FLIR Systems, Italy**  
Tel: +39 02 99 45 10 01  
e-mail: info@flir.it

**FLIR Systems, Belgium**  
Tel: +32 (0)3 287 87 10  
e-mail: info@flir.be



www.flir.com/thg